

Arkansas State Highway and Transportation Department



Leadership Springdale

January 29, 2013



Challenges

➤ **12th** Largest System in USA

➤ **43rd** Highway Revenue Per Mile



How We Compare

Highway Mileage

- **Arkansas** **16,430 miles**
- **Illinois** **16,040 miles**
- **California** **15,205 miles**
- **New York** **14,969 miles**
- **Tennessee** **13,881 miles**
- **Florida** **12,084 miles**



How We Compare

Revenue Per Mile

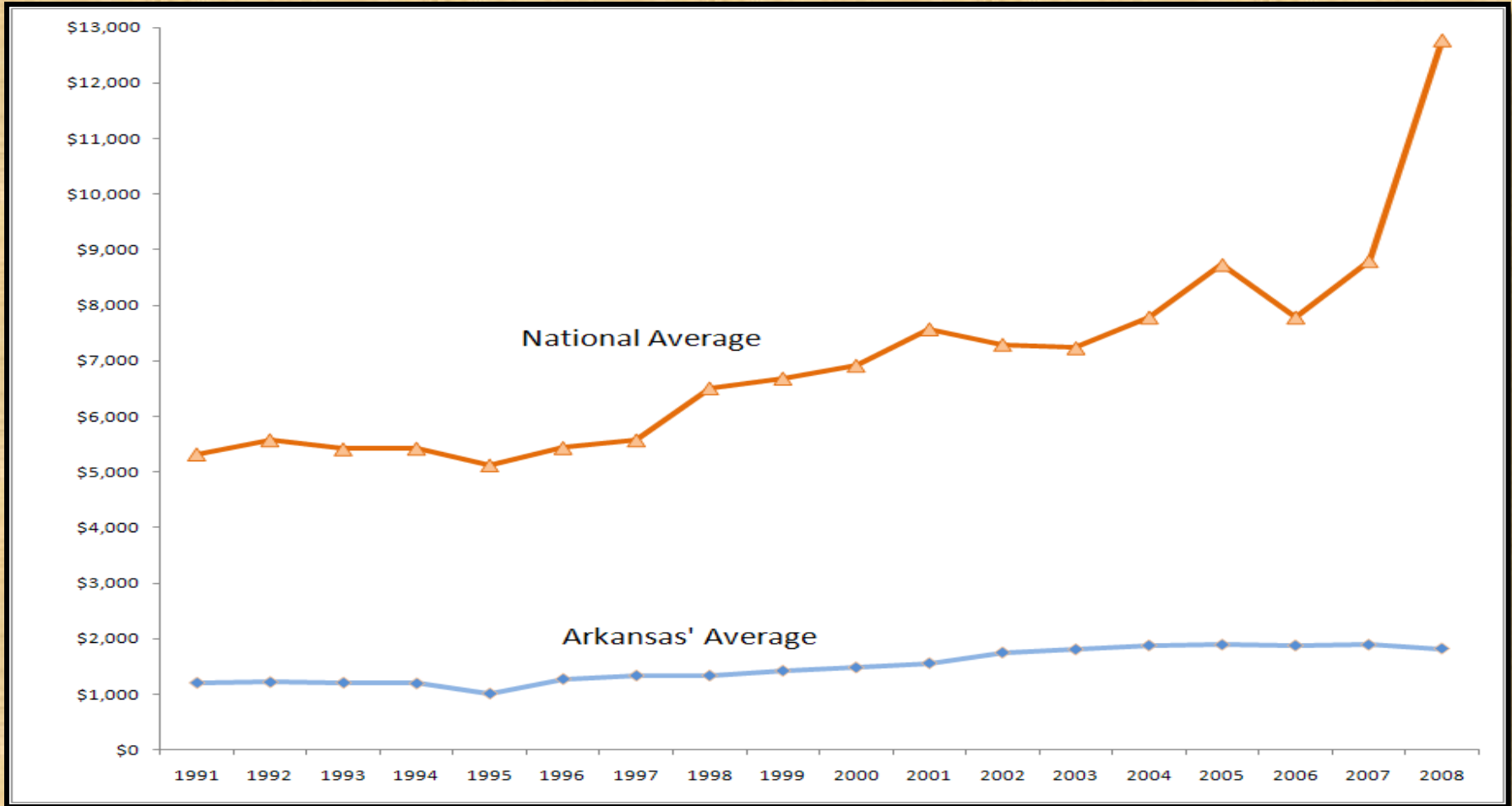
• Arkansas	16,430 miles	\$58,536
• Illinois	16,040 miles	\$252,000
• California	15,205 miles	\$682,000
• New York	14,969 miles	\$237,000
• Tennessee	13,881 miles	\$108,000
• Florida	12,084 miles	\$694,532

How We Compare

Administrative Cost Per Mile

• Arkansas	16,430 miles	\$1,821
• Illinois	16,040 miles	\$8,830
• California	15,205 miles	\$109,417
• New York	14,969 miles	\$84,062
• Tennessee	13,881 miles	\$11,905
• Florida	12,084 miles	\$16,985

AHTD Administrative Costs Per Mile



National Average = \$12,772/mile

Surrounding States' Average = \$5,342/mile

Arkansas = \$1,821/mile

Arkansas' Rank = 49th



Employment Levels

- **1992:** 4,016
- **2013:** 3,586
- **1965:** 3,620



Recent Voter Approved Programs

November 2011

Interstate Rehabilitation Program

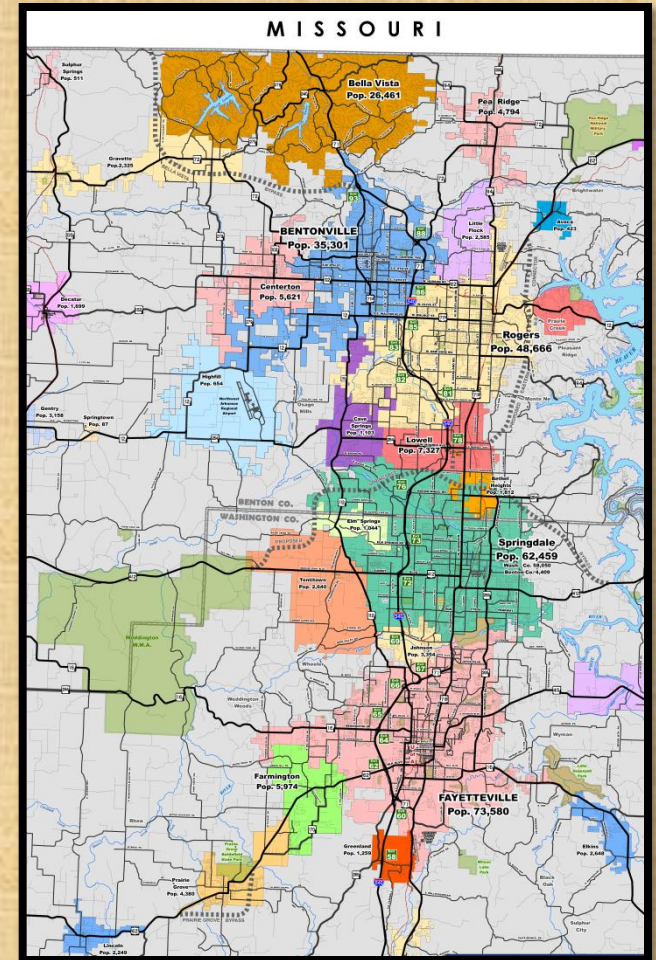
November 2012

Connecting Arkansas Program



Major Projects in Northwest Arkansas

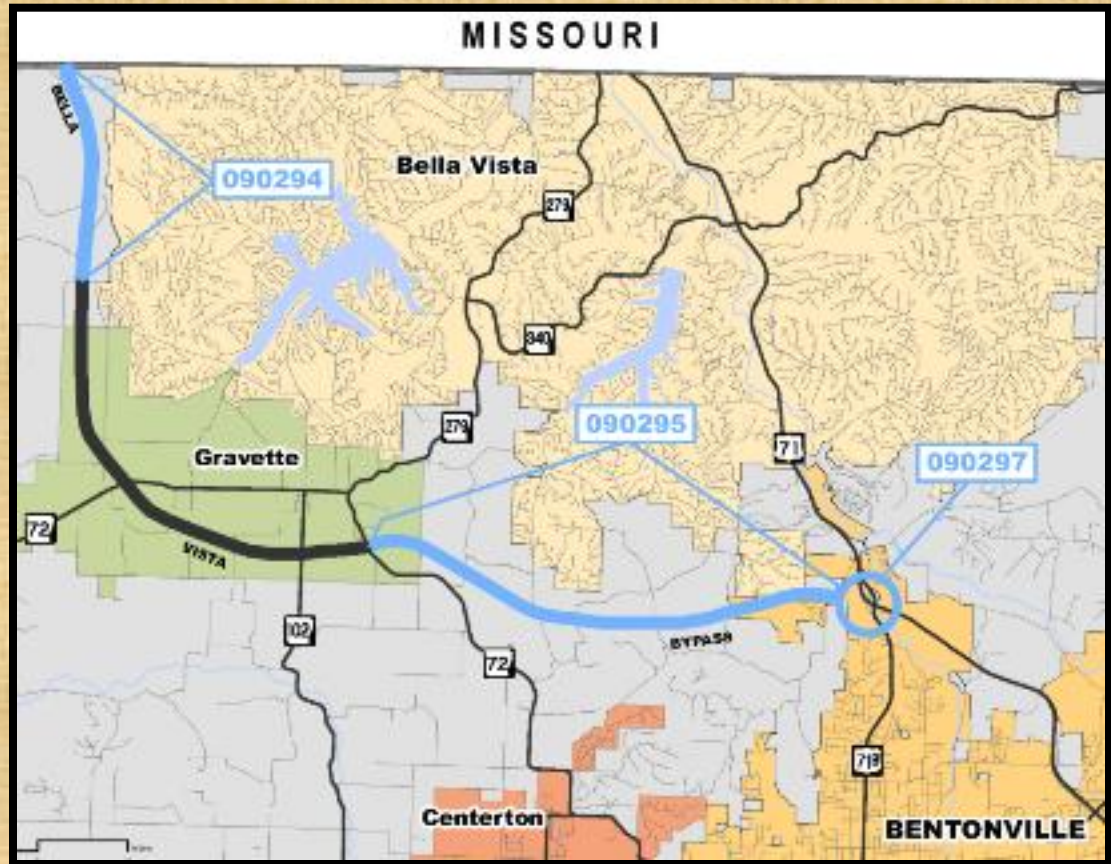
- Bella Vista Bypass
- Springdale Bypass
- NWA Airport Access
- Interstate 540 Improvements
- Eastern North-South Corridor



Highway 71 - Bella Vista Bypass

County Rd. 34 - Mo. St. Line Highway 71 – Highway 72 South Highway 71 Interchange

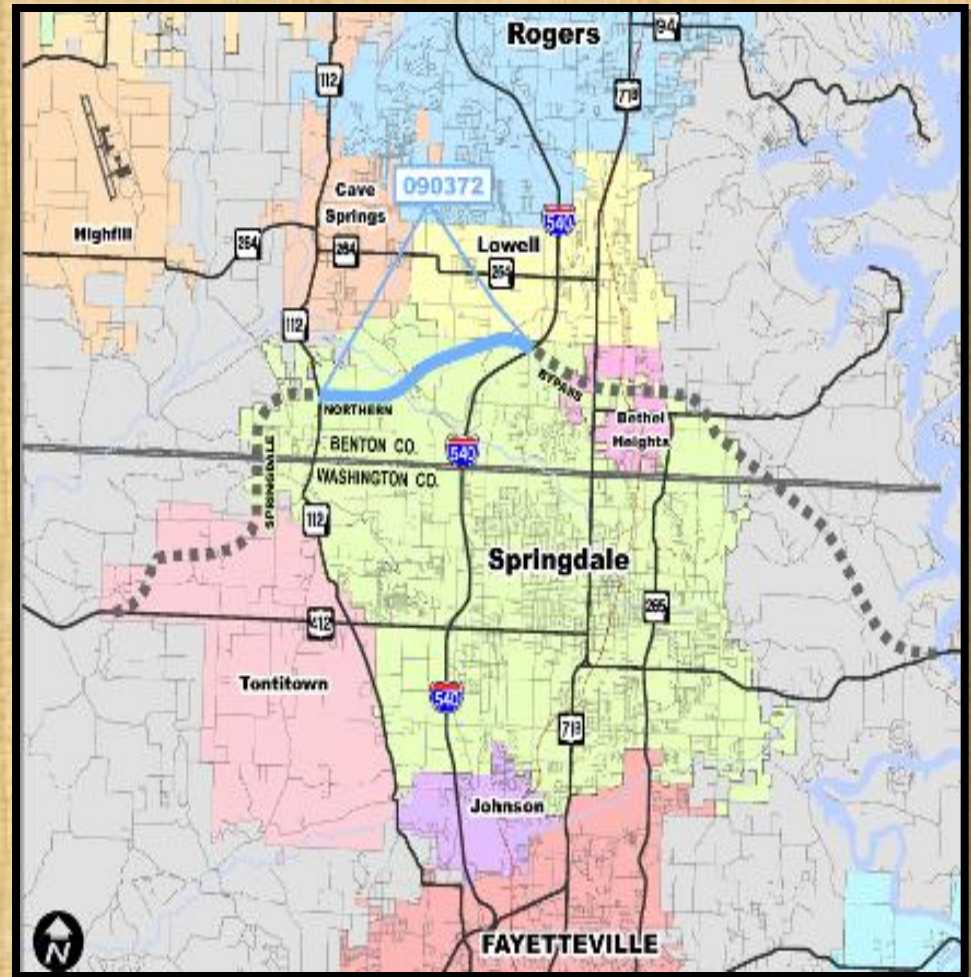
- \$100 Million
 - Half Cent Sales Tax
- Project Status
 - Environmental – 85%
 - Survey – 100%
 - Design – 50%
 - ROW and Utilities – 95% and 55%
- Possible Issues
 - Two Archeological Sites Require Evaluation
 - Coordination with Missouri DOT



Highway 412 – Springdale Bypass

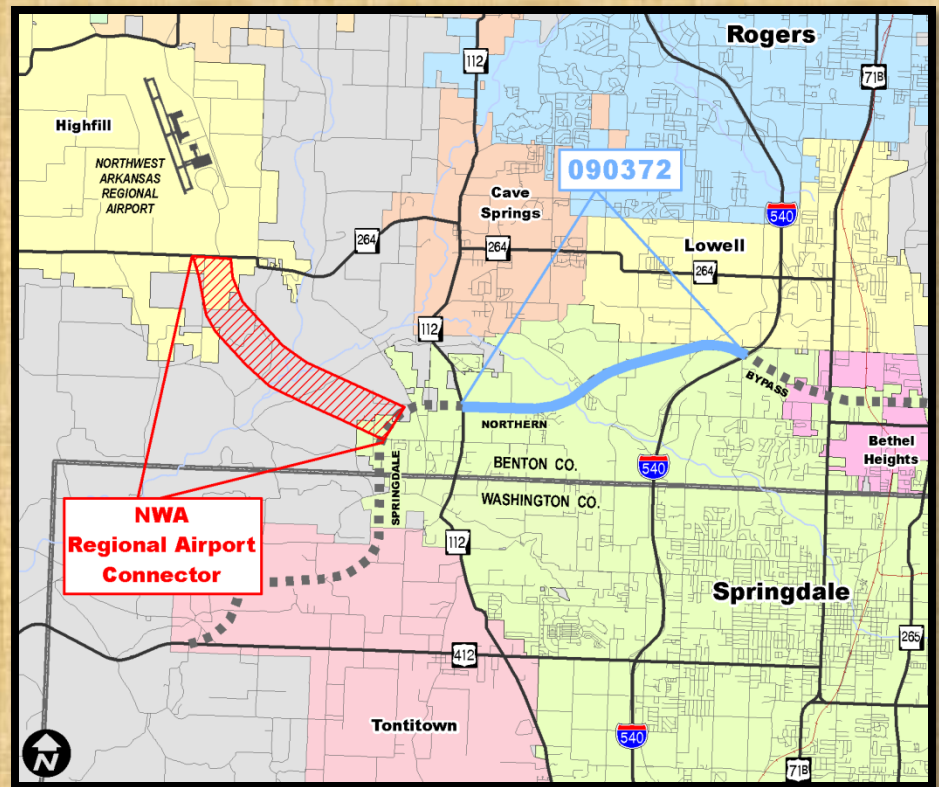
Highway 112 – Interstate 540

- \$150 Million
 - Half Cent Sales Tax
- Project Status
 - Environmental – 90%
 - Survey – 100%
 - Design – 60%
 - ROW and Utilities – 30% and 30%
- Possible Issues
 - Additional Archeological Evaluation
 - Environmental Reassessment
 - Cave Springs Recharge Area
 - Endangered or Threatened Species/Habitat –
Ozark Cavefish, Cave (Benton County) Crayfish



Northwest Arkansas Regional Airport Access

- Draft Environmental Impact Statement was Approved October 2012
- Currently Reviewing Public Comments
- \$93 Million
 - Earmark (\$11 M)
 - Local



FWA-AR-EIS-06-1-D
State Project 090609
Federal Project FAP HPP 0238(1)

**NORTHWEST ARKANSAS REGIONAL AIRPORT
INTERMODAL ACCESS ROAD**

Draft Environmental Impact Statement

Submitted Pursuant to: 42 USC 4332(2)(c)
42 USC 303
42 USC 138
By the
The Northwest Arkansas Regional Airport Authority

Oct 4 2012 *Scott VanLingham*
Date of Approval Northwest Arkansas Regional Airport Authority

10-12-2012 *Ray C. Bennett*
Date of Approval Arkansas State Highway and Transportation Department

10-16-2012 *Frank L. Otter*
Date of Approval Federal Highway Administration

The following persons may be contacted for additional information considering this document:

Brenda Price Arkansas State Highway and Transportation Department Environmental Division PO Box 2261 Little Rock, AR 72203-2261 (501) 569-2281	Randal Looney Federal Highway Administration Arkansas Division Office 700 West Capitol 3130 Federal Office Building Little Rock, AR 72201 (501) 324-5625	Scott VanLingham Northwest Arkansas Regional Airport Auth. One Airport Boulevard Suite 100 Bentonville, AR 72712 (479) 205-1090
--	--	---

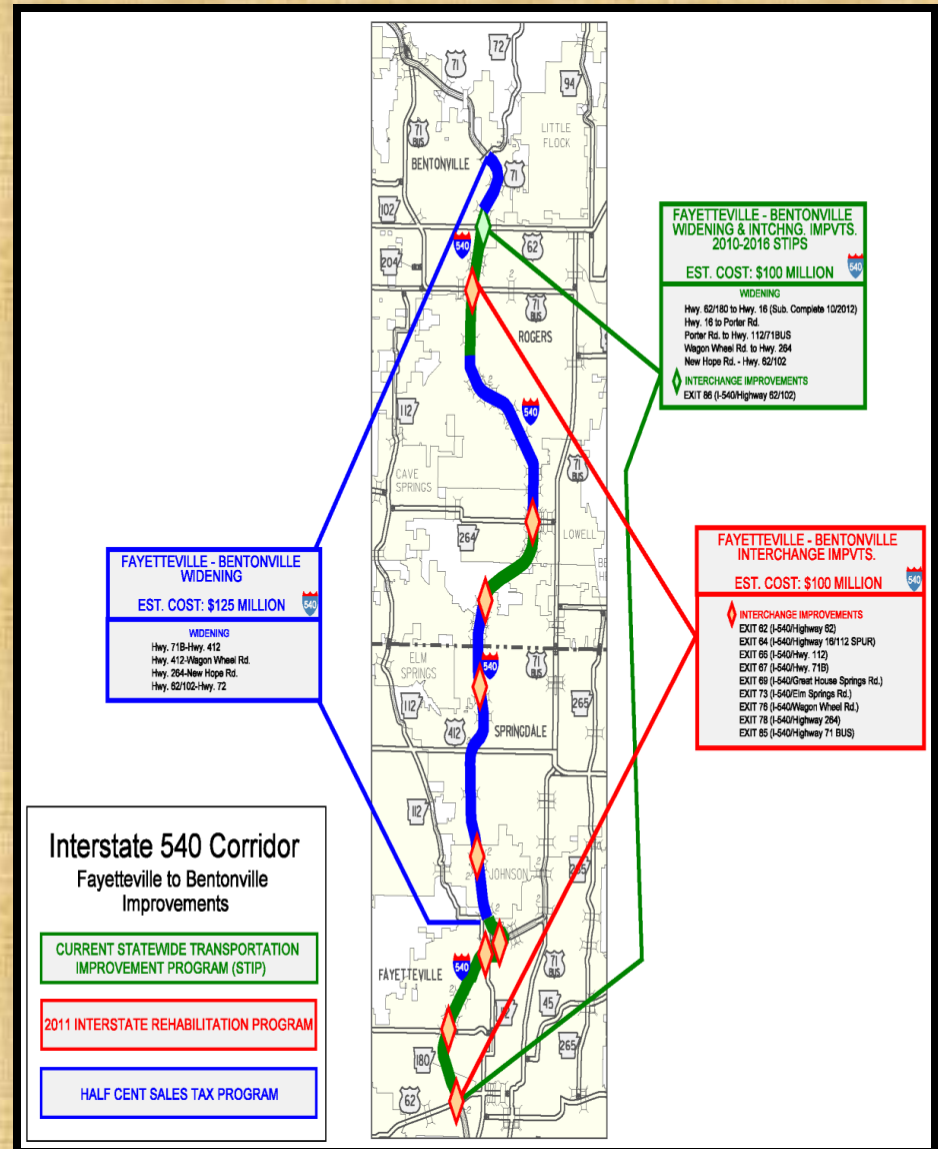
This project is a proposal to construct a four-lane, fully controlled access highway, designed to interstate standards, on a new location connecting the Northwest Arkansas Regional Airport to the state and federal highway system. The proposed highway would be approximately 8 miles (12.9 kilometers) in length through Benton County, Arkansas. Several alternatives were considered including the No Action Alternative.

Comments on this DEIS are due by **Dec 17, 2012** and should be sent to:
The Northwest Arkansas Regional Airport Authority
One Airport Boulevard
Suite 100
Bentonville, AR 72712

Interstate 540 Corridor

- 17 Projects
- \$370 Million
- Approximately 26 Miles

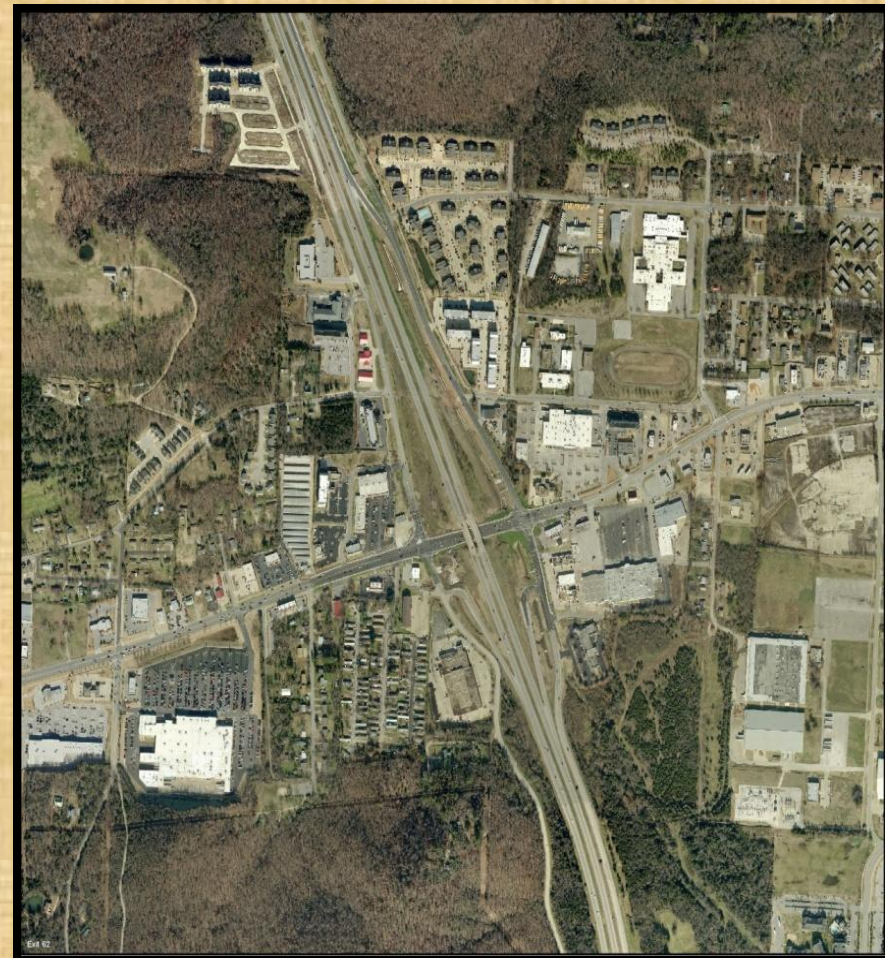
- Possible Issues
 - Cave Springs Recharge Area
 - Endangered or Threatened Species/Habitat – Ozark Cavefish, Cave (Benton Co.) Crayfish
 - Coordination with Interchange Work
 - Railroad Involvement



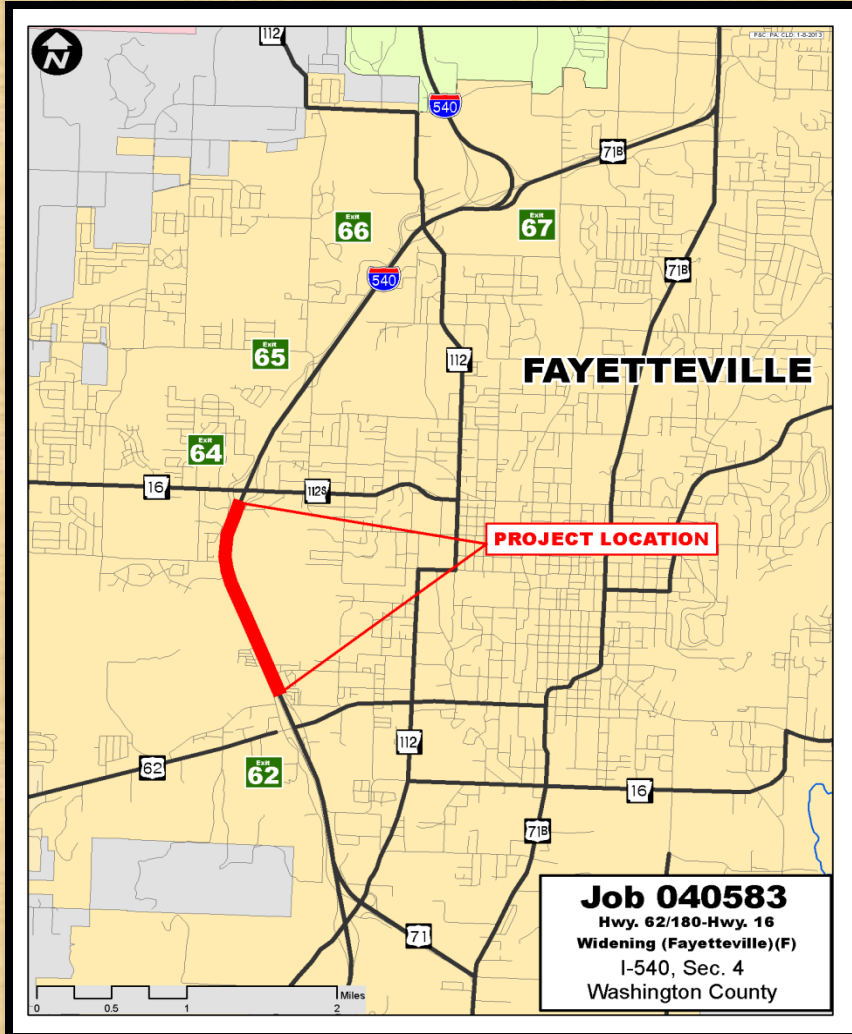
Exit 62 – Highways 62/180 Interchange



- \$25 Million
 - 2011 Interstate Rehabilitation Program
- Scheduled for Late 2014



Highways 62/180 to Highways 16/112 Spur



- \$5.8 Million
 - Statewide Transportation Improvement Program
- Project Status
 - Let to Contract: May 2012
 - Substantially Complete: October 2012

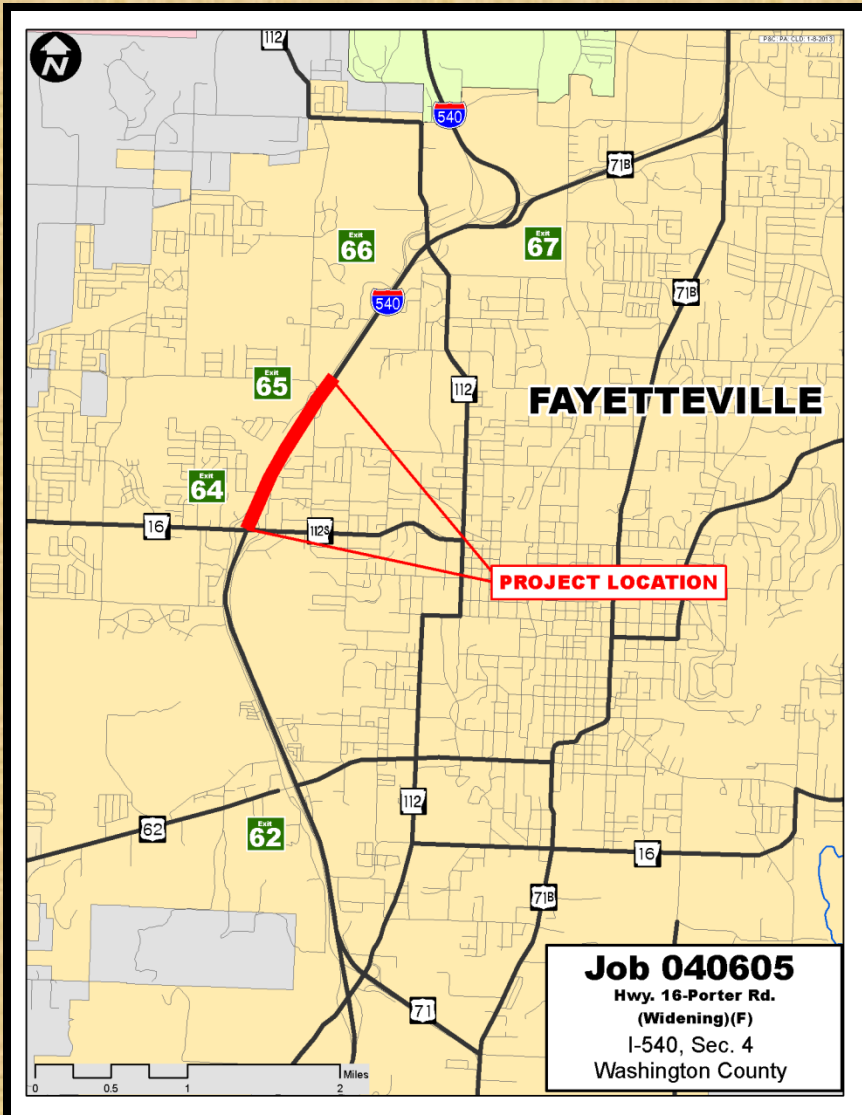
Exit 64 – Highways 16/112 Spur Interchange



- \$19 Million
 - 2011 Interstate Rehabilitation Program
- Scheduled for Late 2014



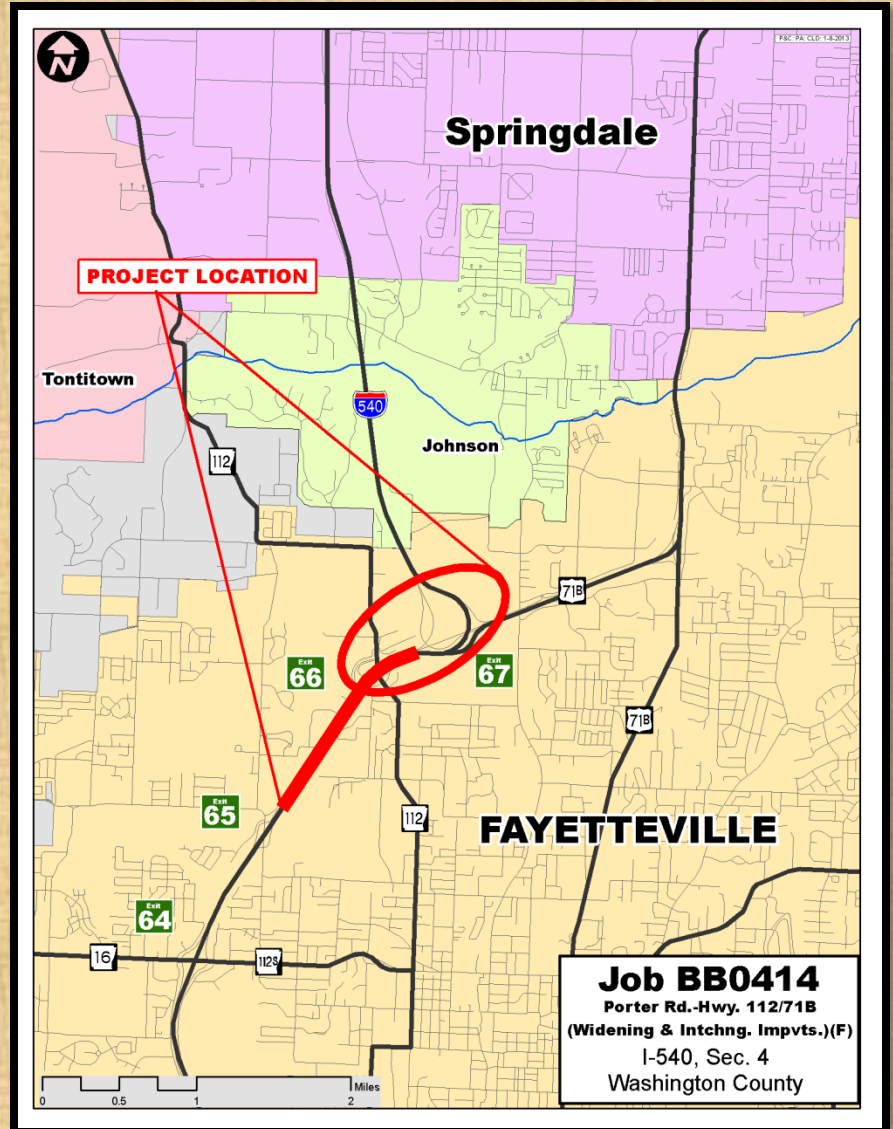
Highways 16/112 Spur to Porter Road



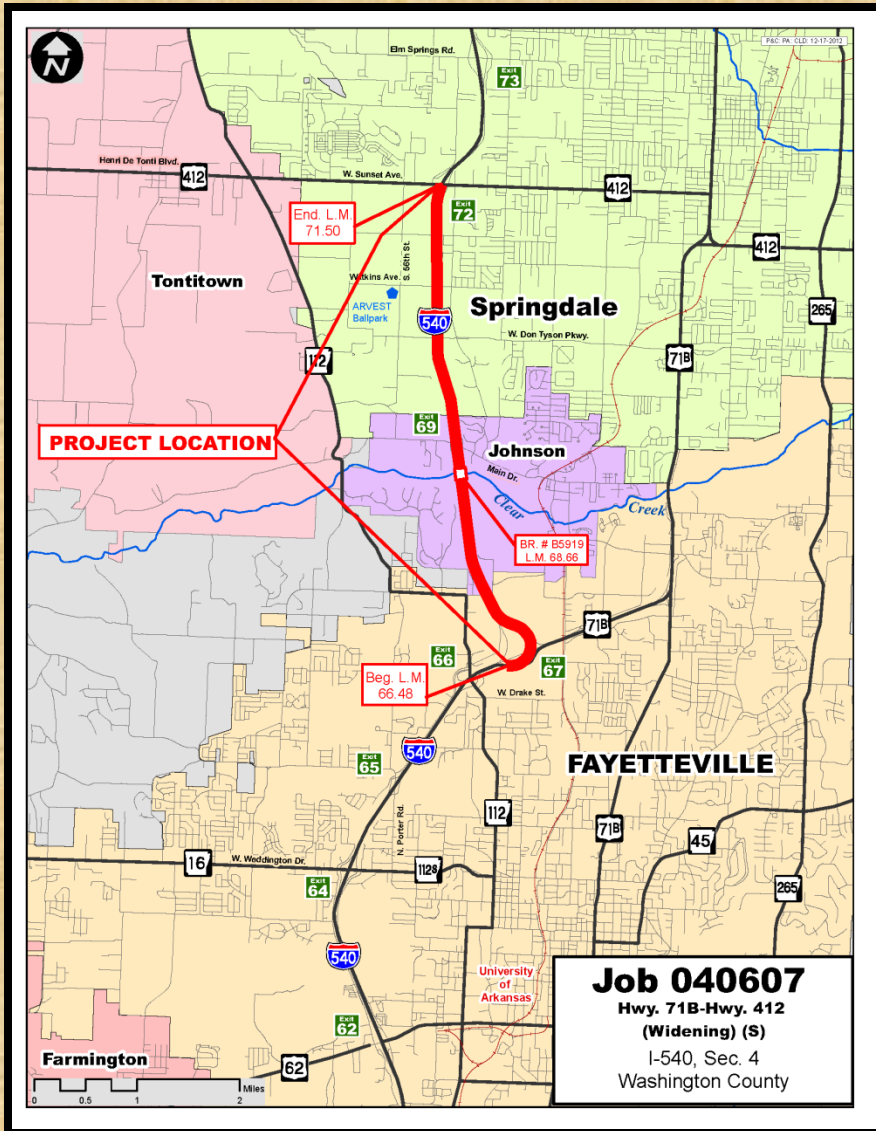
- \$9 Million
 - Statewide Transportation Improvement Program
- Scheduled for Mid-2013

Porter Road to Highway 71B

- \$55 Million
 - 2011 Interstate Rehabilitation Program
 - Statewide Transportation Improvement Program
 - Local Funds
- Scheduled for Mid-2015



Highway 71B to Highway 412 Widening



- \$30 Million
 - Half Cent Sales Tax
- Schedule - TBD

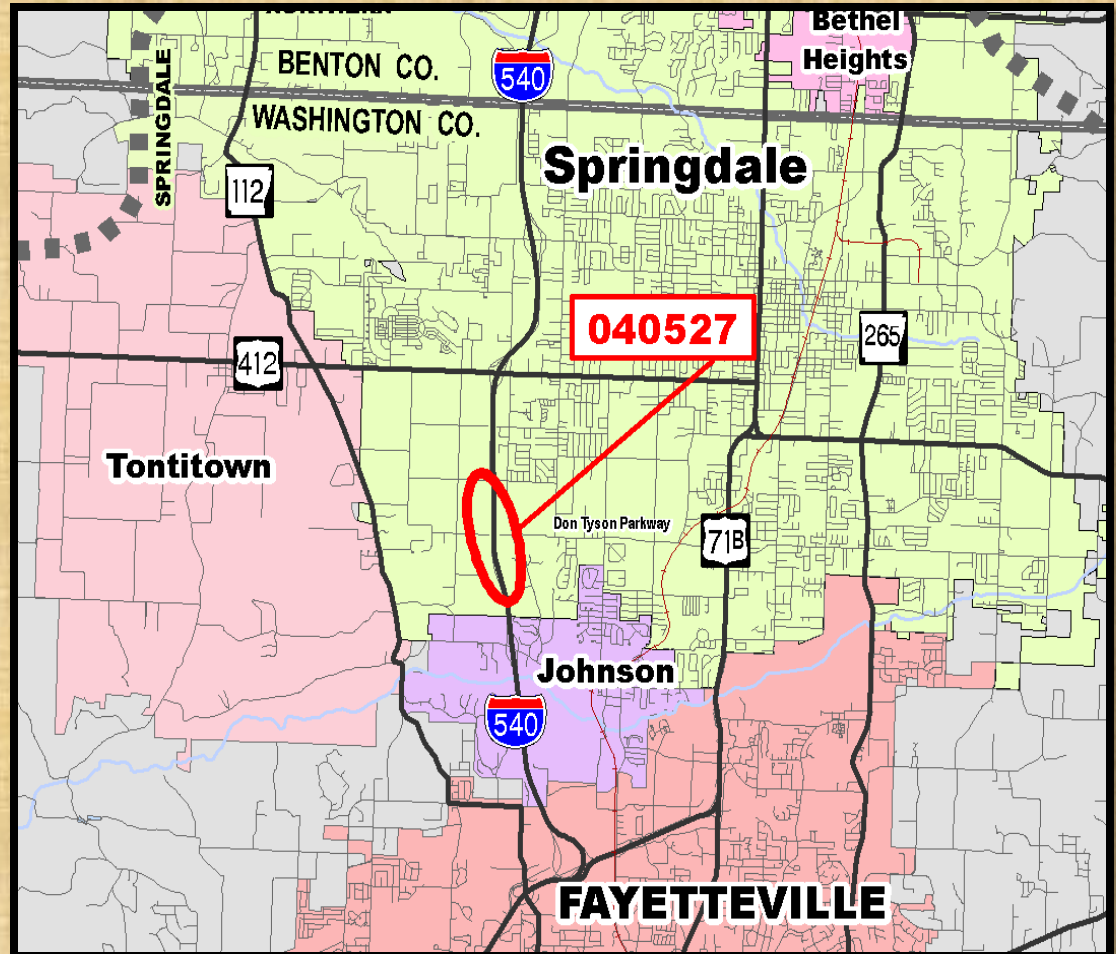
Exit 69 – Greathouse Springs Road Interchange



- \$2 Million
 - 2011 Interstate Rehabilitation Program
- Scheduled for Late 2013

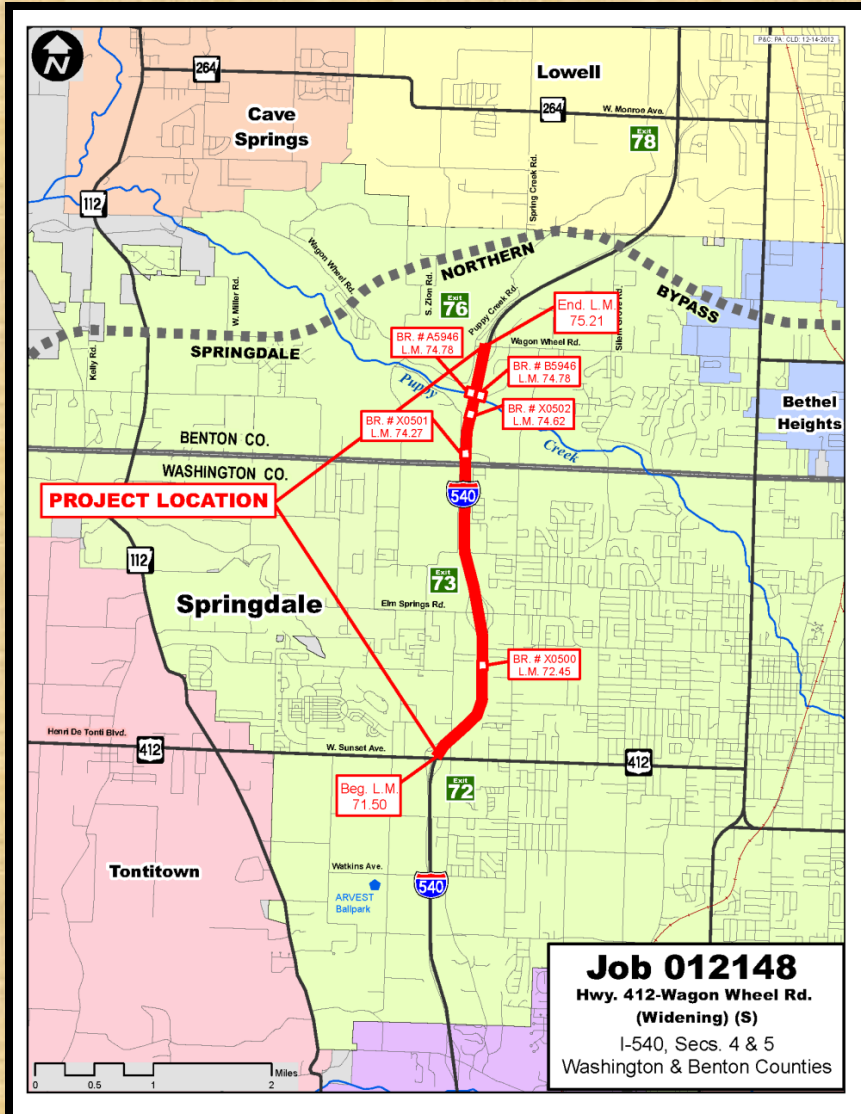


Don Tyson Parkway Interchange



- \$30 Million
 - Local Funds
- Scheduled for Spring

Highway 412 to Wagon Wheel Road Widening



- \$24 Million
 - Half Cent Sales Tax
- Schedule - TBD

Exit 73 – Elm Springs Road Interchange

- \$4 Million
 - 2011 Interstate Rehabilitation Program
 - Possible Local Funds
- Scheduled for Late 2013

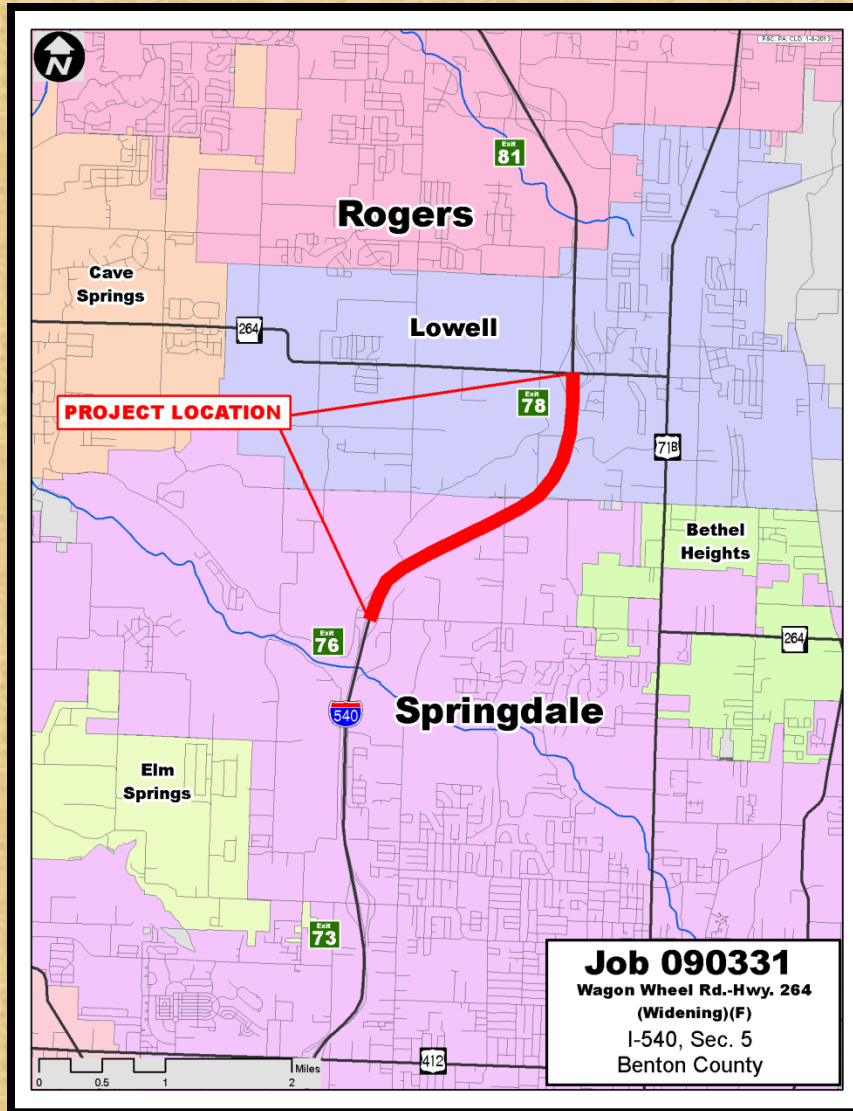


Exit 76 – Wagon Wheel Road Interchange

- \$2 Million
 - 2011 Interstate Rehabilitation Program
- Scheduled for Late 2014



Wagon Wheel Road to Highway 264 Widening



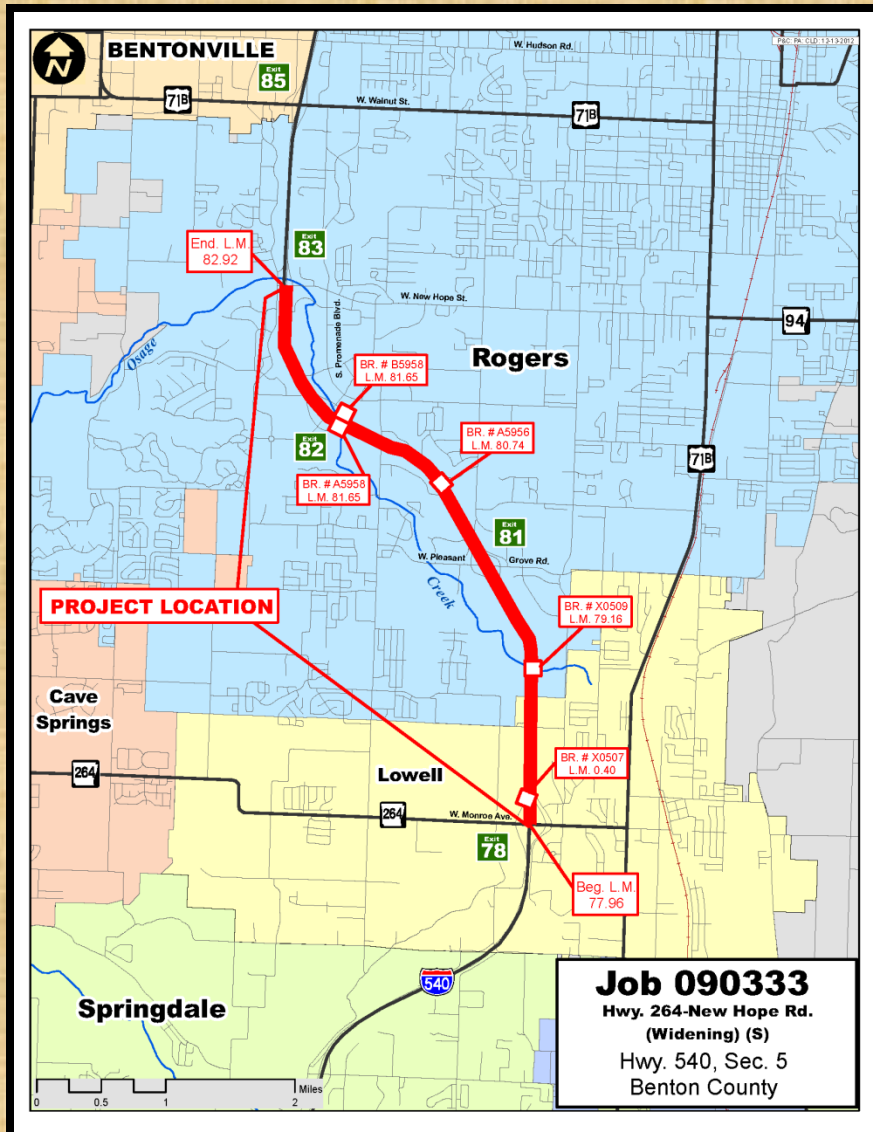
- \$16 Million
- Statewide Transportation Improvement Program
- Scheduled for Late 2013

Exit 78 – Highway 264 Interchange

- \$4 Million
 - 2011 Interstate Rehabilitation Program
- Scheduled for Late 2013



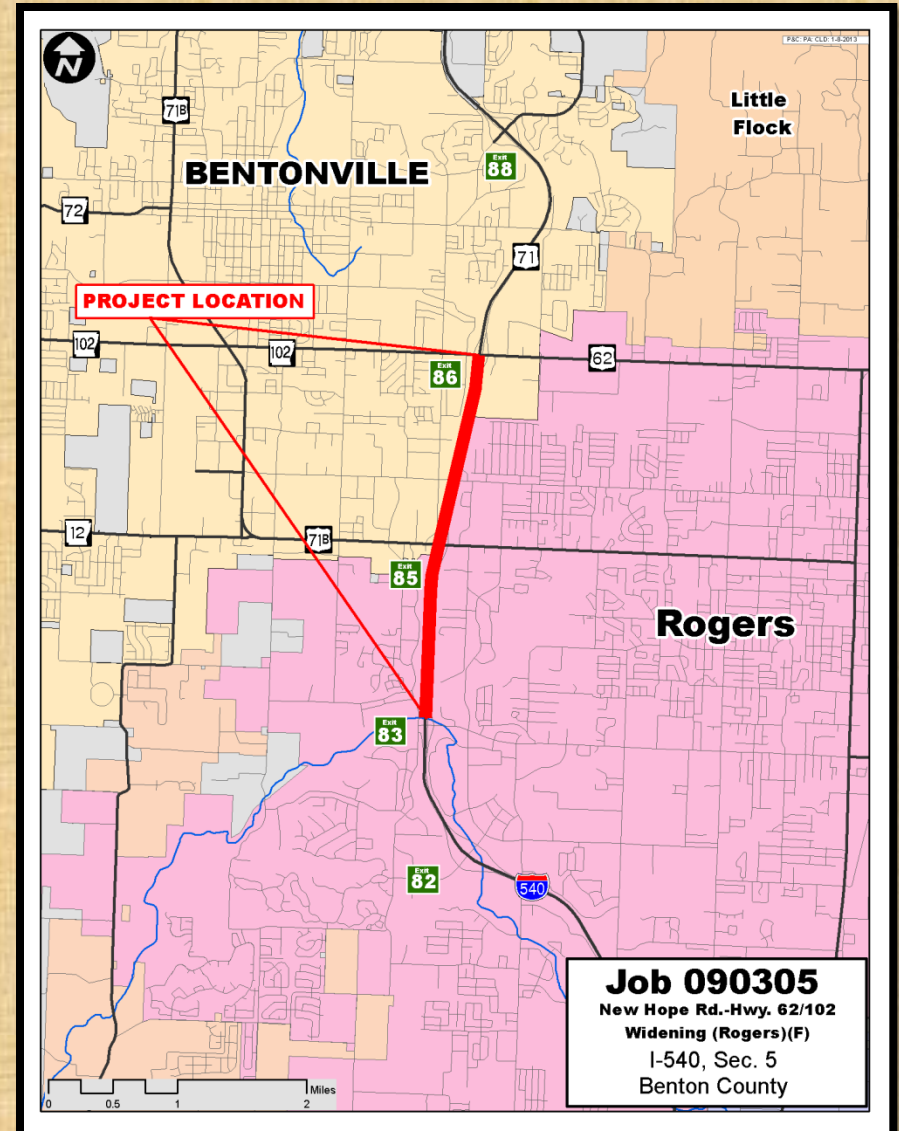
Highway 264 to New Hope Road Widening



- \$30 Million
 - Half Cent Sales Tax
- Schedule - TBD

New Hope Road to Highways 62/102

- \$16 Million
 - Statewide Transportation Improvement Program
- Scheduled for Mid-2014



Exit 85 – Highway 71B Interchange



- \$20 Million
 - 2011 Interstate Rehabilitation Program
- Scheduled for 2015



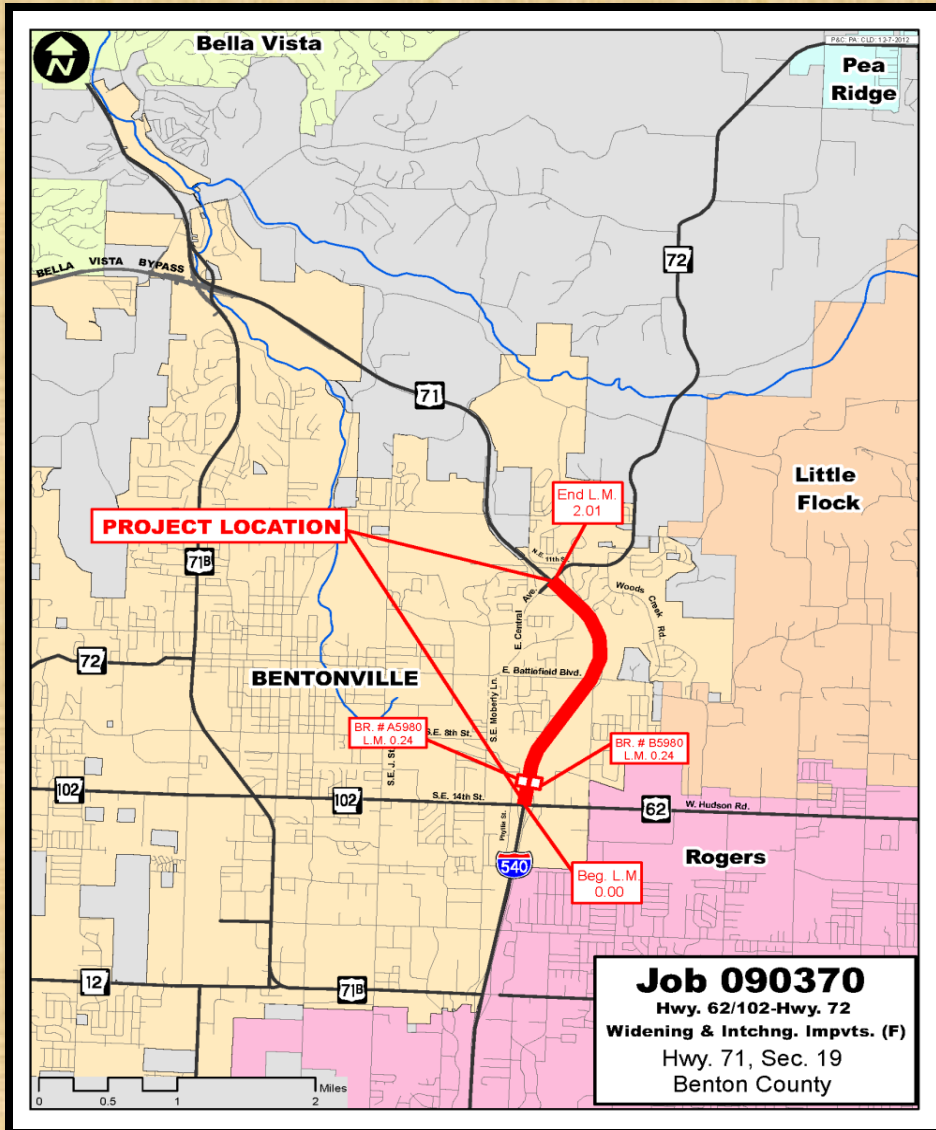
Exit 86 – Highway 62/102 Interchange

- \$53 Million
 - Statewide Transportation Improvement Program
 - Earmark
 - Local
- Scheduled – Contingent on City



Highways 62/102 to Highway 72 Widening

Job 090370 – Hwy. 62/102-Hwy. 72 Widening & Intchnng. Impvts. (F)



- \$15 Million
 - Half Cent Sales Tax
- Schedule - TBD

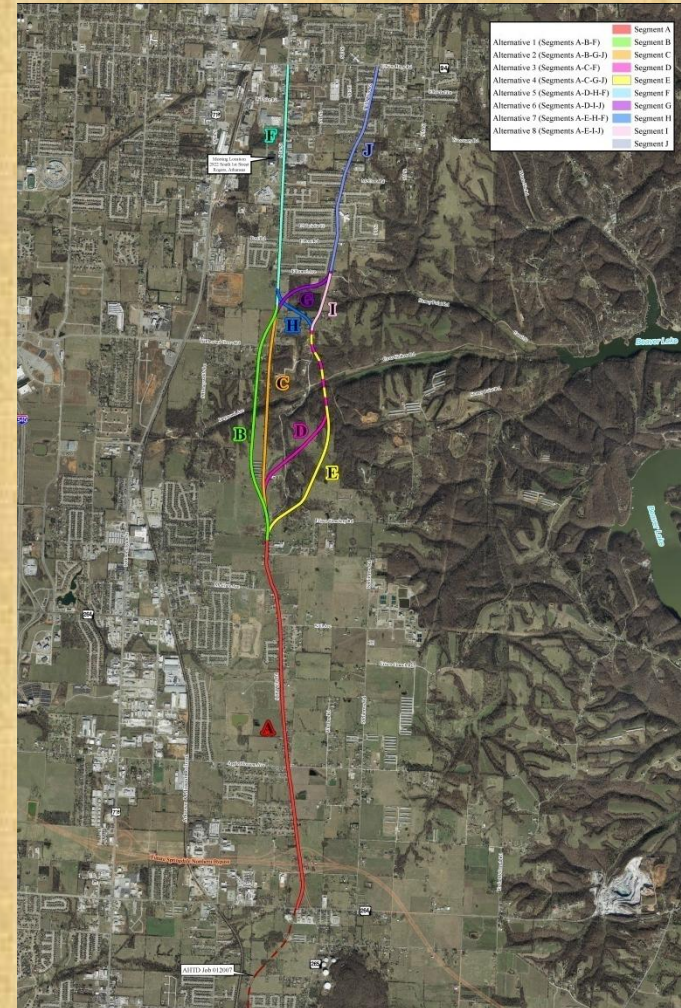
Interstate 540 Corridor Improvement Summary

- **\$ 20.6 Million** - Let to Contract (Completed in the last 10 years)
- **\$ 83.2 Million** - 2013–2016 Statewide Transportation Improvement Program (STIP) Funds
- **\$121.3 Million** - 2011 Interstate Rehabilitation Program Funds
- **\$123.0 Million** - Half Cent Sales Tax Funds
- **\$348.1 Million** - Grand Total



Highway 265 – Eastern North-South Corridor

- \$25 Million
 - Statewide Transportation Improvement Program
- Project Status
 - Environmental – 75%
 - Survey – 80%
 - Design – 0%
 - ROW and Utilities – 0%
- Possible Issues
 - Abandoned Mine System





ArkansasHighways.com

